



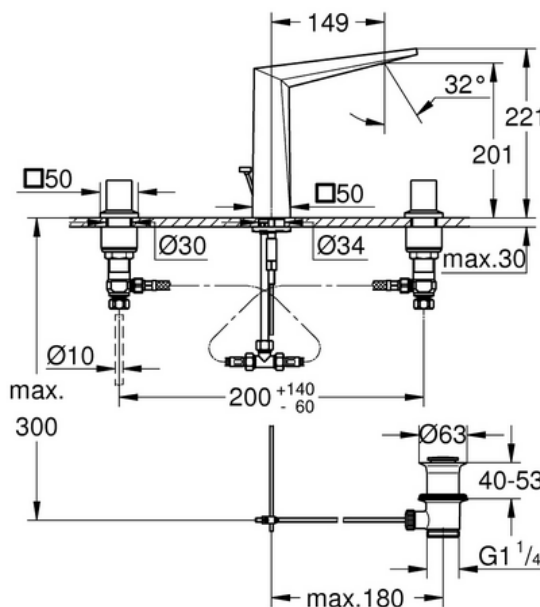






PROJECT		REF		REV	ITEM CODE	
LOCATION		DATE			PAGE	

## SANITARY WARE SPECIFICATION SHEET

Item Descriptions	GROHE (Germany) "Allure Brilliant" Three-hole chrome plated basin mixer ½" M-Size; nominated flow rate <b>4.6 L/min</b> in WELS <b>Grade 1</b> ; Registration No. TM 18- 0334	Illustration/ Drawing										
Dimensions	L149 x W50 x H221 mm	 <div></div>										
Model	20344000											
Finish	Chrome Plated											
Country of origin	Germany											
Manufacturer	GROHE Limited											
Supplier	Acme Sanitary Ware Co. Ltd Mr. Eric Wong/ Mr. Don Yuen	 <p><b>Colour options:</b></p> <table><tr><td>000 I StarLight Chrome</td><td>GL0 I Cool Sunrise</td></tr><tr><td>DC0 I SuperSteel</td><td>GN0 I Brushed Cool Sunrise</td></tr><tr><td>DA0 I Warm Sunset</td><td>DL0 I Brushed Warm Sunset</td></tr><tr><td>A00 I Hard Graphite</td><td>BE0 I Polished Nickel</td></tr><tr><td>AL0 I Brushed Hard Graphite</td><td>EN0 I Brushed Nickel</td></tr></table>	000 I StarLight Chrome	GL0 I Cool Sunrise	DC0 I SuperSteel	GN0 I Brushed Cool Sunrise	DA0 I Warm Sunset	DL0 I Brushed Warm Sunset	A00 I Hard Graphite	BE0 I Polished Nickel	AL0 I Brushed Hard Graphite	EN0 I Brushed Nickel
000 I StarLight Chrome	GL0 I Cool Sunrise											
DC0 I SuperSteel	GN0 I Brushed Cool Sunrise											
DA0 I Warm Sunset	DL0 I Brushed Warm Sunset											
A00 I Hard Graphite	BE0 I Polished Nickel											
AL0 I Brushed Hard Graphite	EN0 I Brushed Nickel											
Contact Tel/Fax	(852) 2388-7171 / (852) 2710-8012											
E-mail	acme@acmesanitary.com.hk											
Website	www.acmesanitary.com.hk											
<p><b>"Allure Brilliant"</b> <b>Three-hole basin mixer 1/2" M-Size</b></p> <ul style="list-style-type: none"><li>ceramic headparts 1/2", 90°</li><li><b>GROHE StarLight</b> chrome finish</li><li><b>GROHE EcoJoy</b> 5.0 l/min. flow limiter</li><li>spout with integrated mousseur</li><li>pop-up waste set 1 1/4"</li><li>pressure-proof, flexible connection hoses between spout and side valves</li></ul> <div><p>20344DC0    20344GL0    20344DA0    20344A00</p></div>												

Note: YouTube  (Allure Brilliant | Product Video) <https://www.youtube.com/watch?v=85P78j7RRsg>



PROJECT		REF		REV	ITEM CODE	
LOCATION		DATE			PAGE	

## SANITARY WARE SPECIFICATION SHEET

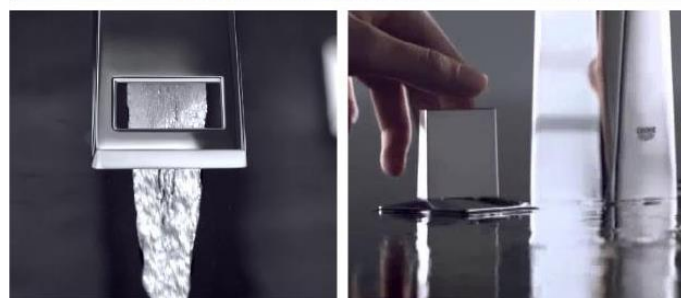
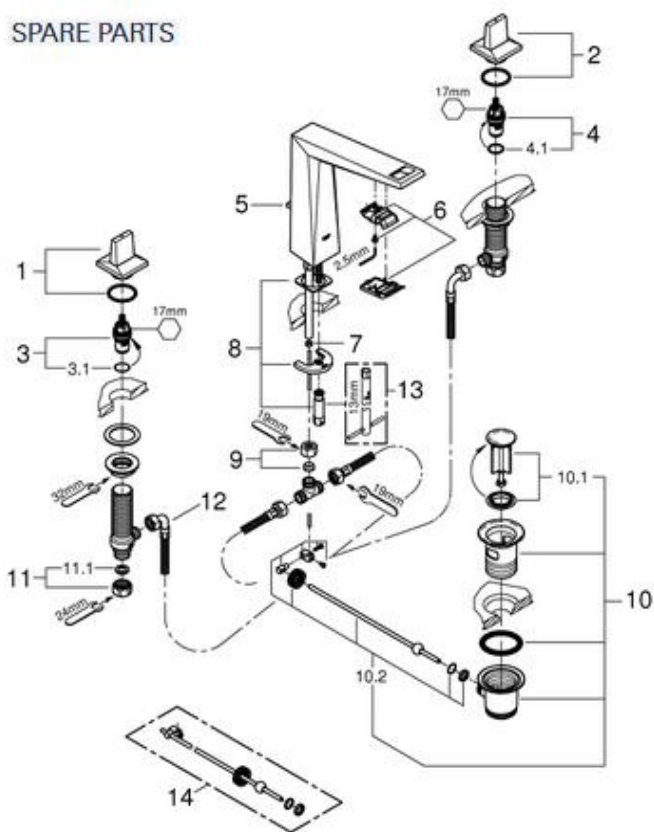
### GROHE ALLURE BRILLIANT

#### LIKE A DIAMOND

With its crisp planes, intriguing angles and cut-out details, Allure Brilliant illustrates the absolute precision that can only be achieved through years of experience and an unfaltering passion for innovation. Complex without being complicated, faceted faucets add a new dimension to bathroom design and a new dimension to water. With its gem-like quality and structured shape, Allure Brilliant exudes architectural appeal.

Our designers and engineers have taken on the role of lapidaries, refining and polishing with utmost care to create a collection of intriguing designs, which will challenge your perception of bathroom fittings.

#### SPARE PARTS



Pos.-nr.	Prod. description	Order-nr.
1	Allure Brilliant handle red	48129000
2	Allure Brilliant handle blue	48130000
3	Ceramic headpart, 1/2"	45882000
3.1	O-ring Ø 18.2 x Ø 1.7	0392400M
4	Ceramic headpart, 1/2"	45883000
4.1	O-ring Ø 18.2 x Ø 1.7	0392400M
5	Pop-up rod	46787000
6	Race	46794000
7	Flow limiter	48160000
8	Shank fastening assembly	46671000
9	Compression union 3/8"	12914000
10	Waste set 1 1/4"	28910000
10.1	Plug for waste set 1 1/4"	07182000
10.2	Eccentric rod	07052000
11	Coupling nut 1/2"	1290100M
11.1	Fibre seal Ø 18,5 x Ø 12 x 2	0138900M
12	Flexible connection hose	45704000
13	Mounting wrench	19017000*
14	Ball rod	07341000*

\* Optional accessories

Note:

\* All information of the above is for the reference only. No prior notice is made if any changes.



自願參與用水效益標籤計劃 - 水龍頭  
Voluntary Water Efficiency Labelling Scheme - Water Taps



註冊證書



茲證明

This is to certify that

將下列水龍頭在本計劃內註冊：  
has registered the following water tap under this scheme :

牌子 / Brand	:	GROHE
型號 / Model	:	20344XXX
種類 / Type	:	Mixing
原產地 / Country or Region Origin	:	Germany

在用水效益標籤上展示的標誌

*Symbolic Presentation on the Water Efficiency Label*



滴水點

*Water droplet(s)*

用水效益級別

*Water Efficiency Grade*

: 1

耗水量

*Water Consumption*

: 4.6

公升/分鐘

*litres/minute*

簽發日期：  
Date of Issue:

20 November 2018



水務署  
Water Supplies Department



水務署署長(黃恩諾代行)  
for Director of Water Supplies



水務署  
Water Supplies Department

總部 Headquarters

香港灣仔告士打道七號入境事務大樓 48 樓

8/F, Immigration Tower, 7 Gloucester Road, Wan Chai, Hong Kong



SD 3321/18 Pt.1 T/J(960)

電話 :

Tel. :

傳真 :

Fax :

2824 0578

15 October 2018



Approval of "GROHE" Basin Mixer  
(General Acceptance No. C20180679)

Your letter ref. WRC/1926 dated 16 August 2018 refers.

Having considered the test report ref. J23330 issued on 6 August 2018 by Nutek Systems (HK) Ltd., this Authority accepts that the fitting described below complies with, and its use when correctly installed does not contravene, the Waterworks Ordinance and Regulations.

**Name of Manufacturer:** Grohe AG

**Country of Origin:** Germany

**Brand:** Grohe

**Details of Fitting:** 1/2" 3-hole basin mixer supplied with one pair of stainless steel wire braided water inlet flexible hose (manufactured by Neoperl GmbH. Model: Neoflex SPX DN6 G3/8") approved by UK's WRAS under ref. 1506306

**Model:** 20344XXX  
(where the digits "XXX" denote the code of colour)

**Body Markings:** 



Expiry Date: 30 July 2023 (for mixer)  
30 June 2020 (for hose)

This Authority hereby permits the use of the above fitting in fresh water plumbing systems subject to full adherence to Waterworks installation requirements. In particular, you are required to draw your customers' attention to the following requirement-

"The cold water supply to the fitting shall be drawn from the same source that supplies the hot water apparatus so as to provide a balanced pressure and to obviate the risk of scalding in the event of a restriction or failure in the water supply."

A condition of this acceptance is that the fitting to be installed shall be replicas of the sample as certified by the testing agent mentioned above and without modifications. This acceptance may be withdrawn at any time if the standard of the fitting installed fails to meet that of the approved sample or if the fitting is found to be unsuitable for use in fresh water plumbing systems.

This acceptance is only applicable to the main body of the fitting, unless other specified.

For the use of the fitting in any project, the General Acceptance Number of this letter must be quoted as a means of identification of acceptance of the fitting by this Authority.

Should you have any enquiries, please contact our Engineer Mr. Terry KUNG at tel. no. 3583 4086.

Yours faithfully,



(CHAN Chung-kun)

for Director of Water Supplies

Encl.

c.c. WSD 3321/1/82 ] - without catalogue  
ME/MC ] - with soft copy only